

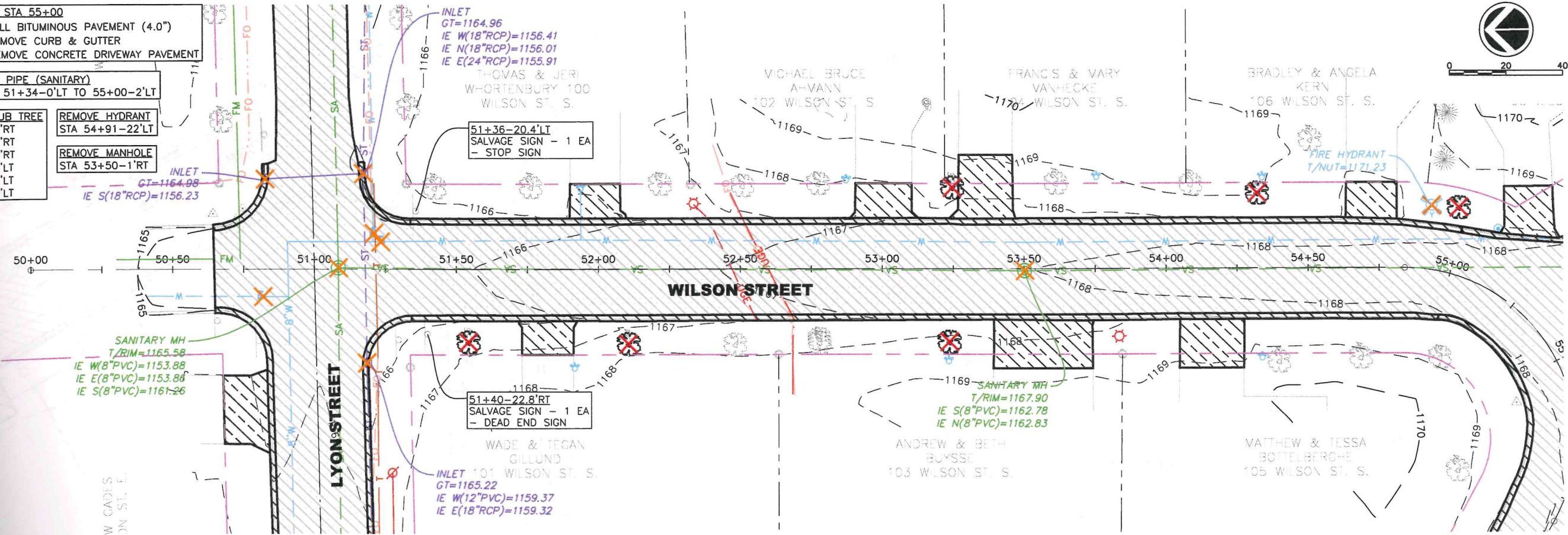
STA 51+34 TO STA 55+00
 1,286 SY - MILL BITUMINOUS PAVEMENT (4.0")
 732 LF - REMOVE CURB & GUTTER
 259 SY - REMOVE CONCRETE DRIVEWAY PAVEMENT

REMOVE SEWER PIPE (SANITARY)
 362 LF - STA 51+34-0'LT TO 55+00-2'LT

CLEAR AND GRUB TREE
 STA 51+54-26'RT
 STA 52+11-26'RT
 STA 53+24-26'RT
 STA 53+25-29'LT
 STA 54+32-26'LT
 STA 54+98-23'LT

REMOVE HYDRANT
 STA 54+91-22'LT

REMOVE MANHOLE
 STA 53+50-1'RT



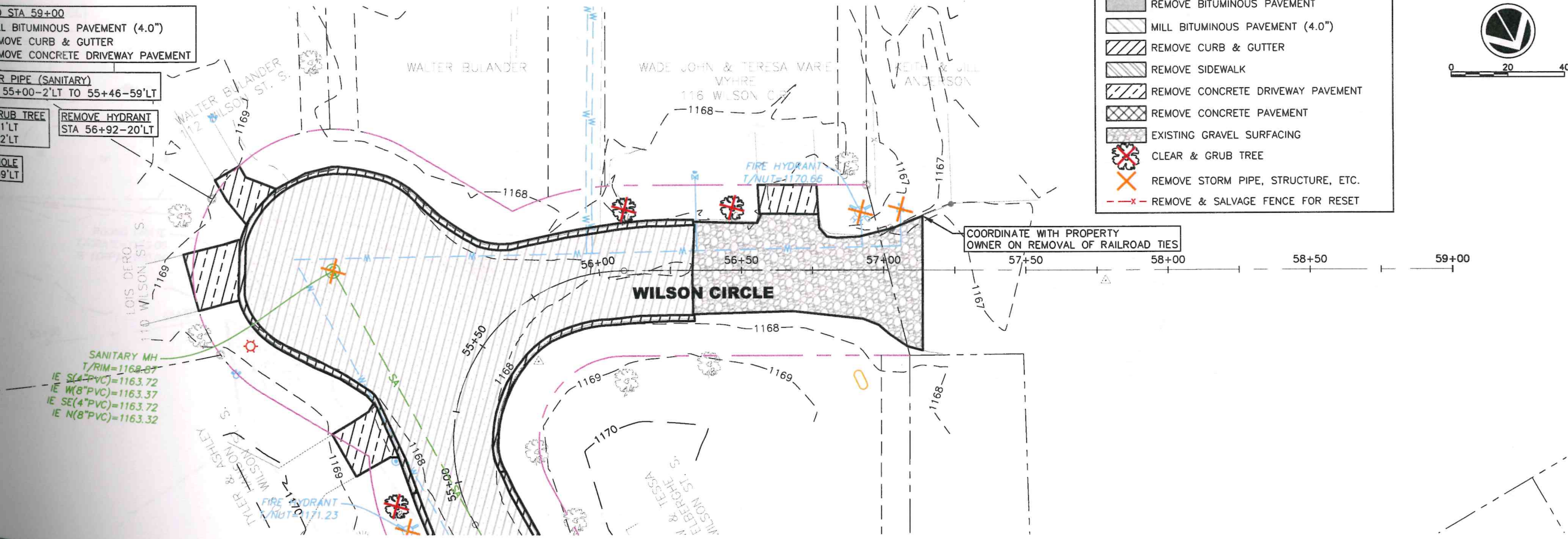
STA 55+00 TO STA 59+00
 979 SY - MILL BITUMINOUS PAVEMENT (4.0")
 400 LF - REMOVE CURB & GUTTER
 120 SY - REMOVE CONCRETE DRIVEWAY PAVEMENT

REMOVE SEWER PIPE (SANITARY)
 84 LF - STA 55+00-2'LT TO 55+46-59'LT

CLEAR AND GRUB TREE
 STA 56+09-21'LT
 STA 56+47-22'LT

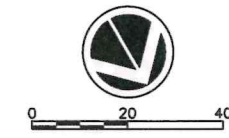
REMOVE MANHOLE
 STA 55+46-59'LT

REMOVE HYDRANT
 STA 56+92-20'LT



LEGEND

- REMOVE BITUMINOUS PAVEMENT
- MILL BITUMINOUS PAVEMENT (4.0")
- REMOVE CURB & GUTTER
- REMOVE SIDEWALK
- REMOVE CONCRETE DRIVEWAY PAVEMENT
- REMOVE CONCRETE PAVEMENT
- EXISTING GRAVEL SURFACING
- CLEAR & GRUB TREE
- REMOVE STORM PIPE, STRUCTURE, ETC.
- REMOVE & SALVAGE FENCE FOR RESET



E. Lyon Street Improvements
 Minnesota, Minnesota

Existing Conditions & Removals

I HEREBY CERTIFY THAT THIS PLAN, SPECIFICATION OR REPORT WAS PREPARED BY ME OR UNDER MY DIRECT SUPERVISION AND THAT I AM A DULY LICENSED PROFESSIONAL ENGINEER UNDER THE LAWS OF THE STATE OF MINNESOTA.

SIGNATURE: *Ruby J. Ruchman, PE* REG. NO.: 38066
 DATE: 7/11/2024

Project Manager: TEB
 Designer: RJR
 Project Number: 670047
 Phone: (605) 339-4157

