

STA 20+00 TO STA 25+00  
 89 SY - REMOVE BITUMINOUS PAVEMENT  
 1,807 SY - MILL BITUMINOUS PAVEMENT (4.0")  
 657 LF - REMOVE CURB & GUTTER  
 169 SY - REMOVE CONCRETE DRIVEWAY PAVEMENT  
 6 SY - REMOVE SIDEWALK

REMOVE SEWER PIPE (SANITARY)  
 492 LF - STA 20+00-4'RT TO 25+00-9'RT  
 24 LF - STA 23+04-34'RT TO 23+05-8'RT

REMOVE MANHOLE  
 STA 20+06-4'RT  
 STA 23+05-8'RT

SALVAGE MAILBOX  
 STA 24+49-15'LT  
 STA 24+57-16'RT

REMOVE DRAINAGE STRUCTURE  
 STA 22+71-18'RT  
 STA 23+38-18'RT  
 STA 23+37-16'LT

CLEAR AND GRUB TREE  
 STA 20+07-22'LT  
 STA 20+45-22'LT  
 STA 21+01-21'LT

22+87-34.6'LT  
 SALVAGE SIGN - 1 EA  
 - STOP SIGN

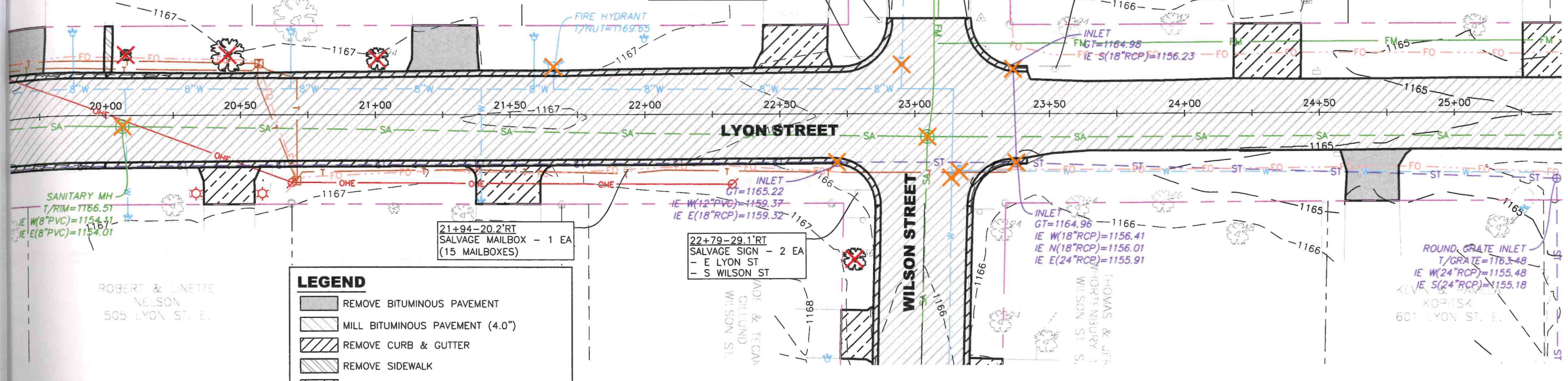
22+80-20.2'LT  
 SALVAGE SIGN - 2 EA  
 - E LYON ST  
 - N WILSON ST

WILLIAM & JESSICA  
 BRADLEY  
 600 LYON ST. E.

23+52-16.7'LT  
 SALVAGE SIGN - 1 EA  
 - WATCH OUT FOR CHILDREN SIGN

REMOVE SEWER PIPE (STORM)  
 492 LF - STA 20+00-19'RT TO 25+00-23'RT  
 32 LF - STA 23+36-17'LT TO 23+38-18'RT

REMOVE HYDRANT  
 STA 21+66-18'LT



**LEGEND**

- REMOVE BITUMINOUS PAVEMENT
- MILL BITUMINOUS PAVEMENT (4.0")
- REMOVE CURB & GUTTER
- REMOVE SIDEWALK
- REMOVE CONCRETE DRIVEWAY PAVEMENT
- REMOVE CONCRETE PAVEMENT
- EXISTING GRAVEL SURFACING
- CLEAR & GRUB TREE
- REMOVE STORM PIPE, STRUCTURE, ETC.
- REMOVE & SALVAGE FENCE FOR RESET

STA 25+00 TO STA 30+00  
 1,716 SY - MILL BITUMINOUS PAVEMENT (4.0")  
 53 LF - REMOVE CURB & GUTTER  
 384 SY - REMOVE CONCRETE DRIVEWAY PAVEMENT

REMOVE SEWER PIPE (SANITARY)  
 404 LF - STA 25+00-9'RT TO 29+10-6'RT  
 199 LF - STA 28+72-76'LT TO 29+19-112'RT

REMOVE DRAINAGE STRUCTURE  
 STA 28+96-32'LT

REMOVE HYDRANT  
 STA 26+37-31'RT

28+50-24.1'LT  
 SALVAGE SIGN - 1 EA  
 - STOP SIGN

SALVAGE MAILBOX  
 STA 25+25-14'LT  
 STA 25+86-16'RT  
 STA 26+98-16'LT  
 STA 27+67-17'RT  
 STA 27+68-17'RT  
 STA 27+69-17'RT

REMOVE MANHOLE  
 STA 26+11-9'RT  
 STA 28+72-71'LT  
 STA 29+11-6'RT  
 STA 29+20-27'RT

27+11-16.3'LT  
 SALVAGE SIGN - 1 EA  
 - SPEED LIMIT SIGN

CLEAR AND GRUB TREE  
 STA 28+42-28'LT

28+47-16.4'LT  
 SALVAGE SIGN - 2 EA  
 - E LYON ST  
 - N EISENHOWER ST

JORDAN & KELSEY  
 KIVPE  
 608 LYON ST. E.

REMOVE SEWER PIPE (STORM)  
 36 LF - STA 25+00-23'RT TO 25+38-25'RT  
 5 LF - STA 28+89-33'LT TO 28+96-33'LT  
 5 LF - STA 28+96-33'LT TO 28+96-40'LT

REMOVE SEWER PIPE (SANITARY)  
 404 LF - STA 25+00-9'RT TO 29+10-6'RT  
 199 LF - STA 28+72-76'LT TO 29+19-112'RT

REMOVE MANHOLE  
 STA 26+11-9'RT  
 STA 28+72-71'LT  
 STA 29+11-6'RT  
 STA 29+20-27'RT

27+11-16.3'LT  
 SALVAGE SIGN - 1 EA  
 - SPEED LIMIT SIGN

CLEAR AND GRUB TREE  
 STA 28+42-28'LT

28+50-24.1'LT  
 SALVAGE SIGN - 1 EA  
 - STOP SIGN

28+47-16.4'LT  
 SALVAGE SIGN - 2 EA  
 - E LYON ST  
 - N EISENHOWER ST

JORDAN & KELSEY  
 KIVPE  
 608 LYON ST. E.

REMOVE SEWER PIPE (STORM)  
 36 LF - STA 25+00-23'RT TO 25+38-25'RT  
 5 LF - STA 28+89-33'LT TO 28+96-33'LT  
 5 LF - STA 28+96-33'LT TO 28+96-40'LT

REMOVE SEWER PIPE (SANITARY)  
 404 LF - STA 25+00-9'RT TO 29+10-6'RT  
 199 LF - STA 28+72-76'LT TO 29+19-112'RT

REMOVE MANHOLE  
 STA 26+11-9'RT  
 STA 28+72-71'LT  
 STA 29+11-6'RT  
 STA 29+20-27'RT

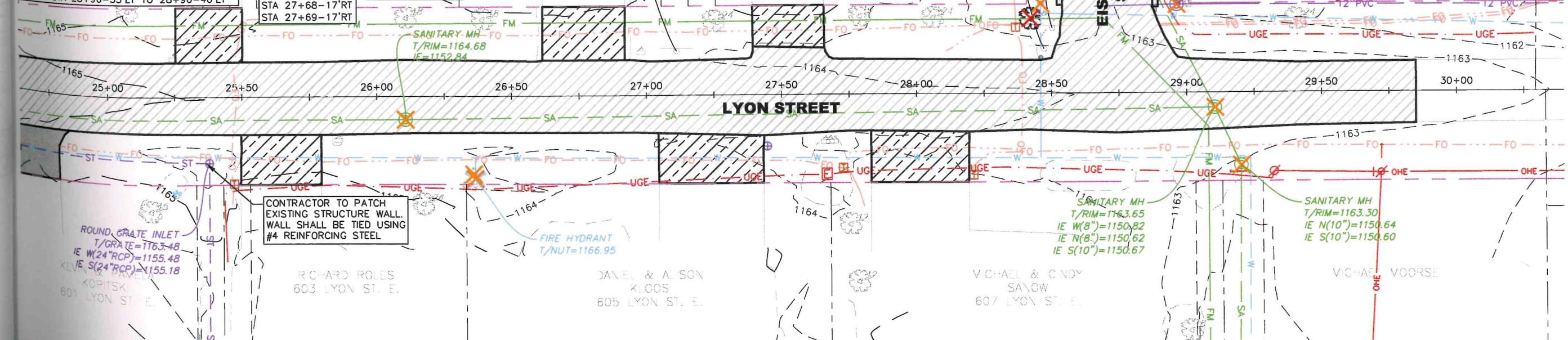
27+11-16.3'LT  
 SALVAGE SIGN - 1 EA  
 - SPEED LIMIT SIGN

CLEAR AND GRUB TREE  
 STA 28+42-28'LT

28+50-24.1'LT  
 SALVAGE SIGN - 1 EA  
 - STOP SIGN

28+47-16.4'LT  
 SALVAGE SIGN - 2 EA  
 - E LYON ST  
 - N EISENHOWER ST

JORDAN & KELSEY  
 KIVPE  
 608 LYON ST. E.



CONTRACTOR TO PATCH  
 EXISTING STRUCTURE WALL.  
 WALL SHALL BE TIED USING  
 #4 REINFORCING STEEL

RICHARD ROLES  
 603 LYON ST. E.

DANIEL & ALSON  
 KLOOS  
 605 LYON ST. E.

MICHAEL & CINDY  
 SAVOW  
 607 LYON ST. E.

MICHAEL VOORSEE

E. Lyon Street Improvements  
 Minnesota, Minnesota

Existing Conditions & Removals  
 I HEREBY CERTIFY THAT THIS PLAN, SPECIFICATION, OR REPORT WAS PREPARED BY ME OR UNDER MY DIRECT  
 SUPERVISION AND THAT I AM A DULY LICENSED PROFESSIONAL ENGINEER UNDER THE LAWS OF THE STATE OF  
 MINNESOTA.  
 SIGNATURE: NAME: Riley J. Knecht, PE  
 DATE: 7/11/2024 REG. NO.: 59066

Project Manager: TEB  
 Designer: RJR  
 Project Number: 670047  
 Phone: (605) 339-4157

